



Global Secure Solutions

COMPANY PORTFOLIO

GLOBAL SECURE
SOLUTIONS



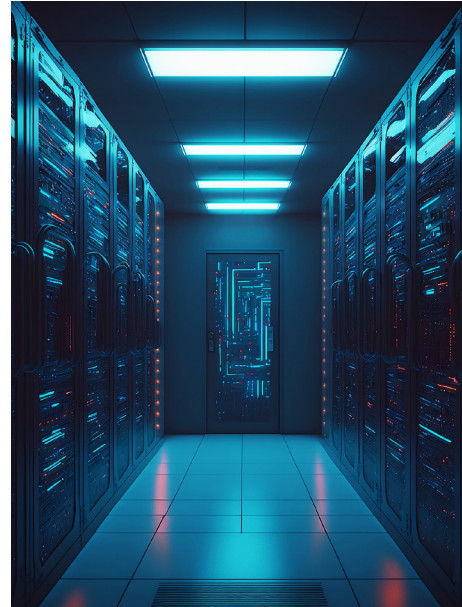
Our Skills



Security and
Compliance Advisory



Digital Forensics and
Incident Response



Next-Gen Security
Operations Program



ISO Certification Training
and Examination

Some of Our Clients



The background features a complex, futuristic digital tunnel or data stream. It consists of multiple concentric, glowing rings and lines in shades of blue, purple, and pink. A bright light source is visible on the left side, creating a lens flare effect. The overall aesthetic is high-tech and modern.

— Products Overview



Consulting & Advisory Services

Consulting Services Overview



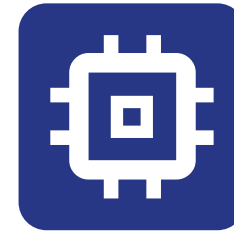
Board Cyber Advisory Services

We can advise and educate the Board of Directors to better understand cybersecurity concepts at a high level.



Governance, Risk & Compliance Consulting

Security breaches have become increasingly prevalent and require a strong GRC framework approach to address the growing threats.



SOC Management Program

We help you enhance your security program by implementing and streamlining next-generation security operations processes.



SWIFT CSP Assessments

We utilise our collective experience in cyber defense and in-depth knowledge of the SWIFT Customer Security Controls Framework to contribute to evaluating the risk drivers associated with the Swift security controls. Our experienced Swift CSP assessors will guide and assist you in the remediation of non-conformities. We partner with you to perform a cybersecurity assessment of your SWIFT-related infrastructure by reviewing, scoping, and conducting a gap analysis, and provide you with recommendations and remediation guidance leading to self-attestation of compliance with the SWIFT Customer Security Controls Framework.



A man in a dark suit, white shirt, and blue tie is shown from the chest up. He is pointing his right index finger towards a digital interface. The interface features several glowing blue icons: a checkmark inside a circular gauge, a group of three people, a globe, a bar chart with an upward arrow, and a document with a checkmark. The background is dark, and the overall aesthetic is professional and tech-oriented.

Managed Security Services

Managed Detection and Response

Managed Detection and Response When you manage enough workstations and servers, keeping software up to date can quickly become complex. Streamline vulnerability and patch management with granular control over your patch management policies using our automated patch deployment solution. Enjoy further protection with pre-defined policies developed by our security professionals as well as automatic threat prevention and malicious activity rollback, for an effortless response and overall time savings. Boost your protection with Managed EDR, our enterprise-grade cybersecurity service which provides threat visibility, simple investigation tools and automated response to detect threats, reveal their full scope and origins and mitigate them rapidly.

Managed End-User Security Awareness Training



Continuous Dark
Web Monitoring



Phish Email
Analysis Tool



Simulated
Phishing Emails



Annual Security
Awareness Training



Micro Training
Videos and Quizzes



Phishing Detection and Response

Designed for enterprise organizations, Cofense Phishing Detection and Response (PDR) platform leverages a global network of close to 30 million people actively reporting suspected phish, combined with advanced automation to stop phishing attacks faster and stay ahead of breaches. Organizations can educate employees on how to identify and report phish, detect phish in their environment and respond quickly to remediate threats. With seamless integration into most major TIPs, SIEMs, and SOARs, Cofense solutions easily align with existing security ecosystems. Cofense understands how to Improve security, aid incident response and reduce the risk of compromise.





Hyper Convergence Infrastructure (HCI)



Nutanix

Nutanix provides a single platform that unifies hybrid multi-cloud management. The Nutanix cloud platform integrates compute, virtualization, storage, networking, security, and containers, and simplifies day to day management of a company's IT environment. The Nutanix cloud platform also extends from private to public clouds, currently available on Amazon Web Services, with support for Microsoft Azure.

NUTANIX



The image features a person's hands in a dark suit jacket typing on a silver laptop keyboard. The scene is overlaid with several semi-transparent blue icons: a globe in a circular frame at the top left, a group of three people in a square frame at the top right, a document with a bar chart and pie chart on the left, and a gear with an upward arrow at the bottom right. A large, semi-transparent blue shield with a white checkmark is centered behind the text. The background is a blurred office setting with a laptop screen and keyboard. The overall aesthetic is professional and tech-oriented.

Security Software Product



Security Analytics and Log Management

Use data collection, aggregation and analysis capabilities to perform vital security functions that detect, analyse and mitigate cyberthreats. Security analytics tools and security monitoring are deployed with the aim of identifying and investigating security incidents or potential threats such as external malware, targeted attacks and malicious insiders. Products include Splunk Enterprise and Enterprise Security.

splunk > enterprise



A dark, high-contrast photograph of two business professionals in suits shaking hands. The image is mostly in shadow, with the hands and parts of the suits highlighted. A semi-transparent blue rectangle is overlaid in the center, containing the text.

Customer Testimonials



"Global Secure Solutions has been instrumental in fortifying our cybersecurity defenses. Their expertise and proactive approach have helped us identify vulnerabilities and implement effective controls. We now have peace of mind knowing our patient data is secure."

Patrick Dasoberi
Chief Information Officer
CarePoint



"I want to thank you for the excellent service we received during the SWIFT Customer Security Program. You knew just what to do to assist us identify and resolve all our issues. Your team are highly skilled and professional in their craft and working with them was effortless and seamless. This has made our local SWIFT Alliance Access landscape. Such service builds great working relationships. We hope you will be there anytime your assistance is needed."

George Amarh
SWIFT Administrator, GN Bank



"Highly recommended for their ISO/IEC 27032 training and certification program."

Stephen Saan-Ire
Network Administrator, World Vision



"Your team's remarkable efforts and excellent contribution during the period of service were outstanding."

Emad Al-Muaybid
Global IT & OT Cybersecurity Executive
Director, Saudi Arabia Basic Industries
Corporation

Contact

GLOBAL SECURE
S O L U T I O N S

🌐 <http://globalsecuresolutions.com>
info@globalsecuresolutions.com

☎ **+233 (0) 243 335 025**
+233 (0) 542 877 530

[in](#) [X](#) [f](#) [@](#) [▶](#) Global Secure Solutions